

BERRY COLLEGE



# *Fine Arts*



CALENDAR OF EVENTS  
2018|2019







Dear Patrons of the Arts,

Welcome to another great year of fine arts events at Berry College! The arts are essential for our flourishing as individuals and as communities. The events in this calendar are a great contribution of Berry College to northwest Georgia. Again this year our fine arts faculty have planned for the Berry community, and the larger community of Rome and Floyd County, a series of performances and events to edify, stimulate and delight us.

Thank you for your interest and support of the arts. We look forward to seeing you at one of our concerts or shows and to partnering with you to encourage and enjoy the arts.

*Dr. Thomas D. Kennedy, Dean  
Evans School of Humanities, Arts and Social Sciences*



Dear Patrons,

We are delighted to offer you a dynamic and robust season of events in 2018-2019. Our events capture a variety of artistic and cultural displays through our art, dance, music and theatre programs.

Many of our offerings feature several nationally-recognized artists in a wide variety of genres and styles. There are also opportunities to see and hear our fantastic artist faculty.

A number of events will feature talented Berry students who demonstrate a deep appreciation for the arts and a desire to learn more about them.

All of the programs and performances are open to the public. It is our hope that you will take advantage of the many fine cultural offerings and engage, share and participate in the fine arts at Berry College! Thank you for your continued support, and we look forward to seeing you at our next event.

*Dr. Adam Hayes, Chair  
Department of Fine Arts*



ALLEN CHEN

## FALL SEMESTER EVENTS

August 20 – September 13, 2018

Allen Chen, *Body of Work* (solo exhibition)

Moon Gallery, M-F, 9 a.m. – 5 p.m.

Artist's talk/reception Monday, August 20, 5 p.m.

*Body of Work* features the latest studio output by Mississippi-based ceramics artist Allen Chen. Chen's work follows multiple paths: organic shapes that are arranged to engage with each other and the space they occupy, discrete sculptures, and a variety of functional vessels. While usually shown separately, the Moon Gallery is fortunate to present these different facets of his work in a single exhibition. His creative process overall mirrors the process of assimilation he underwent when he immigrated to the United States from Taiwan at age 12. He describes a process of piecing together fragmentary experiences in order to comprehend the world as a whole. Chen further discusses ways that he was shaped by his environment, like the mollusks and DNA structures that he references in his installations and sculpture.

Chen earned an MFA from the University of Notre Dame and BFA from San Jose State University. He is an assistant professor in the department of art and design at the University of Southern Mississippi where he currently teaches clay. Prior to that appointment he was awarded residencies to develop his work at Mendocino Art Center, Red Lodge Clay Center, and the Lawrence Art Center. Recent exhibitions include an invitational show at the Ohr O'Keefe Museum of Art in Biloxi, Miss., a solo exhibition at the University of North Georgia, and a juried exhibition at the New Taipei City Yingge Ceramics Museum in Taiwan.



NU-JIVE



## BERRY COLLEGE CONCERT SERIES

### CONCERT I

September 13, 2018

Nu-Jive, featuring Troy Roberts

Ford Auditorium, 7:30 p.m.

Back by popular demand! This concert will feature jazz saxophone phenom Troy Roberts with his band Nu-Jive and music from their latest album, *Perspective*.

Hailing from the remote location of Perth, West Australia, saxophonist and composer Roberts has received numerous accolades including Three Downbeat Jazz Soloist Awards and Two Grammy Nominations. Based in New York City, Roberts maintains a busy performance and recording schedule around the globe with some of the greatest jazz artists of the day including Jeff 'Tain' Watts and Joey DeFrancesco.

We are delighted to have Roberts and Nu-Jive open our 2018-19 Concert Series.

September 17 – October 11, 2018

*PROCESS* (invitational group exhibition)

Fritz Horstman, John Oles, Noelle Rasmussen, Ruth Stanford, Wanda Sullivan

Moon Gallery, M-F, 9 a.m. – 5 p.m.

*PROCESS* features work in a range of media that connects with natural processes and more generally with the term "nature."

Fritz Horstman's sculptures will explore ways that human culture is constructed and how it relates to natural systems, namely water.

In his intimately scaled ceramic vessels, John Oles references the natural landscape through subtle surface variation.

Photographer Noelle Rasmussen creates gestural images of natural settings as well as photograms, camera-less pictures made by objects placed on light sensitive paper and then exposed to light.

Scientist turned artist Ruth Stanford presents *Listed*, a sculptural relief that inventories animals on the Endangered Species Act of 1973.

Wanda Sullivan is showing paintings from her ongoing series, *Synthetic Naturals*, consisting of flowers that are altered through an imaging app and realized in oil paint that serve as metaphors for climate change.

S	C	P	E	O	R	S
C	O	R	P	S	E	S
P	R	O	C	E	S	S
R	S	E	S	P	O	C
S	P	S	C	R	O	E

MOON GALLERY  
EXHIBITION





RYAN FOGG

## GUEST ARTIST SERIES

September 20, 2018

Ryan Fogg, piano

Ford Auditorium, 7:30 p.m.

Dr. Ryan Fogg is Associate Professor of Music and Director of Keyboard Studies at Carson-Newman University. A native Texan, he holds degrees in piano performance from The University of Texas at Austin (DMA), The University of Houston (MM), and East Texas Baptist University (BM, with distinction). Fogg maintains an active performing schedule and has presented solo recitals across the United States. In addition, he has collaborated with the Blair String Quartet, appeared as concerto soloist with the Knoxville Wind Symphony, and recorded new works by American composers through Albany Records.

Fogg currently serves as the Senior Piano Competitions Chair for the Tennessee Music Teachers Association, and he is in high demand as an adjudicator for local and state festivals and competitions. He is well-published, having written articles for *Clavier Companion*, *American Music Teacher*, and *Piano Pedagogy Forum*.

This recital is part of a faculty recital exchange with Berry College music faculty.

September 24, 2018

Ruth Stanford, artist's talk/reception

Moon Gallery, 5 p.m.



RUTH  
STANFORD

Scientist-turned-artist Ruth Stanford will discuss *Listed*, her sculpture that is part of the current *PROCESS* exhibition, within the context of her larger studio practice. Through her work she brings a scientist's approach to a range of topics connected with history such as: social injustice with the case of Michael Brown in Ferguson, Missouri; endangered species; the complexities of place in author Cora Harris's property in Bartow County, Ga.; cemetery architecture; and industrial food production. Her most recent research involves the function of memorials dealing with collective trauma in South Africa, Kenya, and Rwanda.

Stanford is currently an associate professor of sculpture at Georgia State University. She received an MFA from Carnegie Mellon University in Pittsburgh and BFA from the University of Texas at Austin where she also received a BS in zoology (she also has an MS in zoology from Arizona State University).

## GUEST ARTIST SERIES

September 27, 2018

Gypsy At Heart

Ford Auditorium, 7:30 p.m.



GYPSY AT HEART

Based out of Atlanta and Athens, Ga., Gypsy At Heart has created their own unique style of rhythmic-acoustic sounds that's based around a fresh musical vision. At the core of Gypsy At Heart are two accomplished musicians: Joe Leone on guitar and vocals, and Souryadeep Bhattacharyya on sarod (banjo meets sitar). Their shows vary from intimate duo acoustic performances to a full group experience with Jeremiah Raj on oud; a Middle Eastern percussionist; tablas; a violinist; and even pedal steel.

The music of Gypsy At Heart weaves a fusion of eclectic musical genres from East Indian Ragas and Middle Eastern scales, to Latin, Celtic, European Classical, and American Folk and Jazz. Original compositions take audiences on a musical journey; blending improvisations that are spatial, and beautiful; flowing into movements that are breathtaking in intricacy and speed. As the group portrays progressive, unique soundscapes and arrangements, their melodies are flavored with a familiarity that touch on the timeless folk music of the world. While most pieces are instrumental, lyrical songs make known deeply thought-provoking poetry that will touch one's soul.

October 1, 2018

John Oles, artist's talk/reception

Moon Gallery, 5 p.m.



JOHN OLES

Ceramicist John Oles will speak about his distinctive work in porcelain, examples of which are included in the *PROCESS* exhibition. These objects often reference the human figure and natural landscape, usually with altered thrown forms and subtle





## BERRY COLLEGE THEATRE COMPANY



MUSSELWHITE



MAGOULAS

glazes. Through these intimate handmade vessels, Oles strives to convey a sense of fragility and familiarity. He regularly exhibits his work in a range of venues including a recent group exhibition at the Anita P. Folmar Gallery in Montgomery, Ala. In addition, his lectures and workshops are widely sought after around the United States. Oles received his BFA from the University of Massachusetts Dartmouth, and his MFA from Tulane University in New Orleans. He is an assistant professor in ceramics at Jacksonville State University in Alabama.

**October 3 – 7, 2018**

**Berry College Theatre Company presents *Rumors* by Neil Simon**

**Directed by Dr. Anna Filippo**

**Sisters Theatre, 7:30 p.m. Wed.–Sat.; 2 p.m. Sun. matinee, [berry.edu/bctc-tickets](http://berry.edu/bctc-tickets)**

Four couples show up to celebrate the mayor's anniversary, only to find that he has accidentally shot himself in the ear and his wife is nowhere to be found. Blame, lies, and rumors fly as each of them attempts to conceal what they know about the situation and speculate how it happened in the first place. With eccentric characters, unfortunate circumstances, and a multitude of miscommunication, *Rumors* is hailed as one of Neil Simon's greatest comedies.

**October 6, 2018**

**Mountain Day: The Berry College Wind Ensemble**

**Lauren Denney Wright, director**

**Mountain Campus, 1 p.m.**

The Berry College Wind Ensemble will once again be performing at Mountain Day! The ensemble will perform a mini-concert after lunch, then will perform the music for the traditional Grand March and the singing of the Alma Mater.

**October 7, 2018**

**Berry Singers 60th Anniversary Concert**

**Paul Neal, Harry Musselwhite and Ross Magoulas, directors**

**Ford Auditorium, 2 p.m.**

Founded in 1958, the Berry Singers have become an important part of the musical history of Berry College. This fall, the choir will celebrate a reunion with the former directors Ross Magoulas and Harry Musselwhite, joining alumni from multiple generations and the current Berry Singers in celebrating 60 years of beautiful choral music.



TRES VIDAS



## BERRY COLLEGE CONCERT SERIES

**CONCERT II**

**October 9, 2018**

**Tres Vidas**

**Ford Auditorium, 7:30 p.m.**

A chamber music theatre work for singing actress and trio (cello, piano and percussion) based on the lives of three legendary Latin American Women: Mexican painter Frida Kahlo, Salvadoran peasant activist Rufina Amaya and Argentinean poet Alfonsina Storni. Text is by Marjorie Agosin. The show features a wide stylistic range of music, including popular and folk songs of Mexico, El Salvador and Argentina, vocal and instrumental tangos by Carlos Gardel and Astor Piazzolla and new music written especially for the Core Ensemble by Osvaldo Golijov, Orlando Garcia, Pablo Ortiz and Manuel DeMurga.

## FACULTY ARTIST SERIES

**October 9, 2018**

**Kris Carlisle**

**Ford Auditorium, 7:30 p.m.**

A program of contemporary music by some of the 21st century's most prominent up-and-coming composers. From the fourth installment of the American Evolution project, *Programmatic Music for Piano* includes pieces reflecting trends in contemporary society.



KRIS  
CARLISLE





## JURIED EXHIBITION IN MOON GALLERY



TRACY  
XIAN



WENDY CASE

**blot (juried group exhibition)**  
Moon Gallery, M-F, 9 a.m. – 5 p.m.  
Juror's talk/reception Monday, October 22, 5 p.m.

*blot* is a juried exhibition marking the 200th anniversary of the publication of Mary Shelley's *Frankenstein*. The title comes from Frankenstein's creature wrestling with his identity in chapter 13: "Was I, then, a monster, a blot upon the earth, from which all men fled and whom all men disowned?" *blot* features work in a range of media by artists who are grappling with issues raised by Shelley's novel. Dr. Steven J. Kraftchick outlines several of these issues in his essay, "Who is a Monster, When?" published in 2018, by focusing on fundamental questions of identity, such as beauty and ugliness, true representation, the boundaries of good, and responsibility for our creations.

Kraftchick is Professor of the Practice of New Testament Interpretation in the Candler School of Theology and Graduate Division of Religion at Emory University and will determine the work to be included in the exhibition. In addition to his research on Pauline thought and language theory, he is exploring the transhuman and its connection with theology and technology. Kraftchick holds a BS from the University of Florida, an MDiv from Abilene Christian University, and a PhD from Emory University.

**October 18, 2018**  
**High School Choir Festival**  
Paul Neal and Stefanie Cash, clinicians  
Ford Dining Hall, 4 p.m.

High school singers from across Georgia will spend the day at Berry College working with the music faculty. At the conclusion of the festival, they will present a concert of choral works, showcasing the talent of the students.

### GUEST ARTIST SERIES

**October 23, 2018**  
Tracy Xian, piano  
Ford Auditorium, 7:30 p.m.

Dr. Qiao-Shuang (Tracy) Xian is Professor of Piano at LaGrange College (Georgia). She holds a DMA and MM in piano performance and piano pedagogy from Louisiana State University and a Bachelor of Music from Columbus State University in Columbus, Ga.

Xian is a gifted pianist, chamber musician and teacher. She has been a finalist or prizewinner in state, regional, national and international piano competitions. Included among these are the Georgia and Louisiana State Music Teacher Association competitions, Music Teachers National Association [MTNA] Southern and South Central Divisions, and in 1998 she was the national winner of the MTNA Collegiate Artist Piano Competition. She was also twice a prizewinner in the Beethoven Club International Piano Competition. Xian also performed solo recitals throughout the Southeast and was featured recitalist at the state music teacher association conferences of Georgia, Louisiana and South Carolina and at the national conferences of MTNA and the American Matthey Association for Piano. She has appeared as soloist and chamber musician on various recital series and music festivals throughout the United States and with orchestras performing works by Liszt, Ravel and others. Several of her performances have been broadcast on National Public Radio.

### FACULTY ARTIST SERIES

**October 25, 2018**  
Wendy Case, violin  
ChoEun Lee, piano  
Ford Auditorium, 7:30 p.m.

Dr. Wendy Case has performed throughout the United States, Canada, and India as a chamber musician and recitalist. She is the founding violinist of the Brahms' Ghost Piano Trio and has collaborated with members of the Emerson Quartet, Cavani Quartet, Cleveland Orchestra, Metropolitan Opera, and Philadelphia Orchestra. Her passionate performances have been heard on NPR, in Carnegie Hall, the National Opera Center, the Kimmel Center of Philadelphia, and Severance Hall. She studied at the University of Michigan, the Cleveland Institute of Music, and Stony Brook University. Case is Artist Affiliate of Violin and Viola at Berry College.





CHOEUN LEE

ChoEun Lee, a native of Korea, is a pianist, vocal coach and chamber musician. She has given numerous performances in Korea, the United States, Austria, Italy, Australia, and New Zealand, in major venues including Carnegie Hall in New York City, Ozawa Hall in Tanglewood Music Center and Harris Concert Hall in Aspen Music Festival. She has worked extensively in recitals and masterclasses with renowned musicians, including Stephanie Blythe, Martin Katz, Anne Sofie von Otter, Christine Schäfer, Dawn Upshaw, and Linda Watson.

Lee holds a B.M. from Kyungwon University, a M.M. from the University of Cincinnati, and a D.M.A from the University of Southern California. She is currently teaching at Lee University (Cleveland, Tenn.) as an assistant professor in collaborative piano and vocal coaching.



## BERRY COLLEGE CONCERT SERIES CONCERT III

October 26, 2018

**Songwriters' Summit featuring Jim Lauderdale,  
Griffin House and Pierce Pettis**  
Panel Discussion – 1 p.m.

**Masterclass with Berry College Music Students – 3 p.m.**  
**Concert – 7:30 pm**

*All events held in Ford Auditorium and open to the public.*

The Berry College Music Program will host its first-ever Songwriters' Summit featuring three industry greats: Jim Lauderdale, Griffin House and Pierce Pettis.

Lauderdale is both a "songwriter's songwriter," who's written/co-written many modern classics for iconic artists, as well as an intuitive sideman, who's enhanced the music of a bevy of esteemed musicians. As a solo artist, since 1986 up until now, he's created a body of work spanning 29 albums of imaginative roots music, encompassing country, bluegrass, soul, R&B and rock, as well as helping pave the way for the current Americana movement.

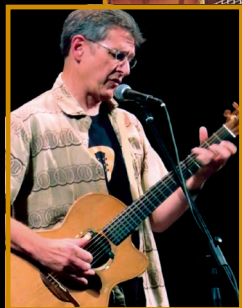
Recording and performing for over a decade, House has toured with Ron Sexsmith, Patti Scialfa, Josh Ritter, John Mellencamp, Mat Kearney and The Cranberries. He received early critical acclaim on CBS Sunday Morning, and his songs have since been featured in countless films and television shows such as *One Tree Hill*, *Army Wives*, and *Brothers and Sisters*. He has also appeared on *Late Night* with Craig Ferguson. Most recently, *CNN Newsroom* invited House to perform "Paris Calling," from *So On and So Forth*, live on the air, and the song has been picked up by radio prior to being serviced. House has released 10 albums and continues to headline his own national tours. He lives in Nashville, Tenn., with his wife Jane and their two daughters.

You know you've got a shot when Joan Baez covers one of your songs. That's what sparked the career of Alabama singer-songwriter Pettis in 1979 when Baez chose to include *Song at the End of the Movie* on her *Honest Lullaby* album. He embarked on his solo career in 1987 with the independent release of *Moments*, an album which some still consider his finest. Pettis' fans are other recording artists who add his original tunes to their own repertoires.

October 28, 2018

**Berry College Choirs Fall Concert: *Sacred Space***  
**Paul Neal and Stefanie Cash, directors**  
**Frost Chapel, 3 p.m.**

The Berry College Choirs Fall Concert will feature an afternoon of choral music presented in the sacred space of the Frost Chapel. One of the iconic buildings on the campus, the concert will present music chosen to highlight its location and acoustics. The concert will present the Berry Men's and Women's Choirs as well as the beloved Berry Singers.



LAUDERDALE  
HOUSE  
PETTIS



BERRY CHOIRS





## BERRY COLLEGE SYMPHONY ORCHESTRA



## BERRY COLLEGE THEATRE COMPANY



MATTHEW HOCH

**November 3, 2018**

**Berry College Symphony Orchestra Fall Concert**  
**Rockets, Rollers, and Sighs: Music from Mannheim**  
Eric Hanson, director; Nathan Hackett, viola  
Ford Auditorium, 7:30 p.m.

The Berry College Symphony Orchestra will perform Johann Stamitz *Symphony No. 8 in E-flat Major, Op. 11, No. 3* and will be joined by Milwaukee Symphony violist Nathan Hackett for Karl Stamitz *Viola Concerto, Op. 1*. Hackett will also give a masterclass earlier in the day. Violin and viola students from the surrounding areas are encouraged to attend.

**November 8, 2018**

**Berry Jazz Ensemble Fall Concert: New Jazz**  
John David, director  
Ford Auditorium, 7:30 p.m.

This concert will showcase contemporary music from around the world written for jazz ensemble. Performing repertoire from the last 20 years, the Berry Jazz Ensemble will present music not often heard or yet recorded, and will feature premieres of new works from our student writers. Other featured composers will include Maria Schneider, Darcy James Argue and David Springfield.

**November 11, 2018**

**Berry College Wind Ensemble Fall Concert**  
Lauren Denney Wright, director; Brenton Alston, guest conductor  
Ford Auditorium, 3 p.m.

This concert brings guest conductor Dr. Brenton Alston from Florida International University to conduct the Berry Wind Ensemble. The music will cover a broad spectrum of works to provide a variety of pieces that will entertain all audience members.

**November 14 – 18, 2018**

**Berry College Theatre Company presents *Silent Sky* by Lauren Gunderson**  
Directed by Artist-in-Residence David Alford  
Sisters Theatre, 7:30 p.m. Wed.–Sat.; 2 p.m. Sun. matinee, [berry.edu/bctc-tickets](http://berry.edu/bctc-tickets)

While many male astronomers receive credit for their discoveries, seldom is heard of the women who pioneered the way before them. *Silent Sky* tells the real-life story of 19th century astronomer Henrietta Leavitt and her contributions to science, all as she balances dealing with health complications, familial obligations and social limitations. A play dedicated to uncovering the history of the stars and restoring the voices that were once lost.



## BERRY COLLEGE CONCERT SERIES CONCERT IV

**November 15, 2018**  
**Matthew Hoch, baritone**  
College Chapel, 7:30 p.m.

Matthew Hoch is Associate Professor of Voice and Coordinator of the Voice Area at Auburn University, where he teaches applied voice, diction and vocal literature courses. Prior to 2012, he spent six years as Assistant Professor of Voice at Shorter College, where he taught applied voice and vocal literature. He served as Coordinator of Voice Studies.

He has appeared as a soloist with the Oregon Bach Festival, the Santa Fe Desert Chorale, the Vox Consort, Harmonie Universelle, the Hartford, Rome and Nashua Symphony Orchestras, the Atlanta Baroque Orchestra and the United States Coast Guard Chamber Players.

Hoch is the 2016 winner of the Van L. Lawrence Fellowship, awarded jointly by the Voice Foundation and NATS. He is the author of three books, *A Dictionary for the Modern Singer* (2014), *Welcome to Church Music & The Hymnal 1982* (2015), and *Voice Secrets: 100 Performance Strategies for the Advanced Singer* (2016), coauthored with Linda Lister.





## BERRY COLLEGE DANCE TROUPE

**November 16 – 17, 2018**

**Berry College Dance Troupe presents *Night at the Movies***

**Ford Auditorium, 7:30 p.m.**

**Admission at the door: \$3 students, \$6 adults**

Join us for a *Night at the Movies*, featuring many of your favorite tunes from current films, as well as those from by-gone eras. The energy of each particular movie will be captured through contemporary dance, ballet, jazz and Latin dance. Free popcorn with the price of admission!

**November 17, 2018**

**Workshop: Georgia Middle School and High School**

**All-State Audition Preparation**

**Lauren Denney Wright, director**

**Ford Music Building**

This event provides All-State music audition preparation for middle school and high school students taught by Berry College music faculty. Email [berryallstate@gmail.com](mailto:berryallstate@gmail.com) for more information.

**November 27 – December 3, 2018**

**Select (student group exhibition)**

**Moon Gallery, M-F, 9 a.m. – 5 p.m.**

**Reception November 27, 11 a.m.**

Select showcases work made in the studio art classes during the fall 2018 semester. Art from introductory through advanced courses in design (Two-Dimensional Design, Light Media, Digital Imaging), ceramics (Hand Building Clay and Throwing Clay), and Drawing and Painting will be displayed in the last gallery show of the semester. It will also present the final project in Advanced Studio Projects, which is a small body of work from the several students taking this course in preparation for their Senior Thesis in the spring term. Berry studio art faculty will facilitate a discussion about the work on display at the opening reception.

**December 1, 2018**

**Berry College Choirs' *Lessons and Carols***

**Paul Neal and Stefanie Cash, directors**

**Berry College Chapel, 7 p.m.**

Drawn upon the traditions of the *Lessons and Carols Services* in England, the Berry College Choirs will perform in the beautiful Berry College Chapel. The joyous occasion will feature traditional scripture readings paired with renaissance motets, new compositions, and familiar carols such as *O Come, All Ye Faithful* and *Hark, the Herald Angels Sing*. Come and enjoy this Berry tradition!

## SPRING SEMESTER EVENTS

**January 7 – 31, 2019**

**Junco Sato Pollack, *Art Textiles* (solo exhibition)**

**Moon Gallery, M-F, 9 a.m. – 5 p.m.**

**Artist's talk/reception Monday, January 7, 5 p.m.**

Junco Sato Pollack has been deeply invested in the creation of art textiles for over 30 years. Her practice is integrated with all aspects of her everyday life that includes the recitation of scriptures, meditation, gardening, yoga and *qigong* exercises. These activities are informed by her studies of Zen and Tantric Buddhism in addition to other Eastern philosophies combined with yoga and New England Transcendentalist traditions. Her textile interests link ancient methods, like the creation of fiber materials such as silk and kudzu fibers, with the latest advances in textile printing but often expressed within prescribed forms such as mandalas and scrolls.

The recipient of numerous awards and commissions, her work is widely collected and exhibited, most recently at the Swan Coach House Gallery in Atlanta. She has a BA in English linguistics and literature from Aoyama Gakuin University in Tokyo and studied textiles at the Seian Women's University in Kyoto, the Kyoto Fiber Polytechnic University, and the Musée des Arts Décoratifs in Paris. Her MFA is in textile design from the Rochester Institute of Technology in upstate New York.



## STUDENT EXHIBITION IN MOON GALLERY



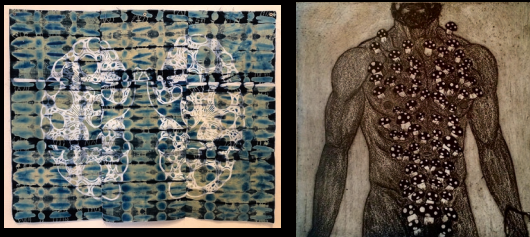
## JUNCO SATO POLLACK



COLE AND WRIGHT



DONOVAN STOKES



INVITATIONAL  
EXHIBITION  
IN MOON GALLERY

January 24, 2019  
Berry College Jazz Ensemble Feature Concert  
at the Georgia Music Educators Association State Conference  
Guest Artist: Keith Carlock, "The Jazz Soul of Steely Dan"  
Oconee River Room, Classic Center, Athens, GA, 4 p.m.

## GUEST ARTIST SERIES

January 10, 2019  
Laura Cole and Trey Wright, jazz duo  
Ford Auditorium, 7:30 p.m.

"The duo were warm, playful, serious, humble, and dad-burn entertaining"  
—Rusty Taylor, *The Jazzonian*

Over the past decade, guitarist Trey Wright and vocalist Laura Coyle have established themselves as first-call musicians on the Atlanta jazz scene. They joined forces in 2017 to form the Laura Coyle and Trey Wright Duo. United by their love of classic jazz pairings including Joe Pass and Ella Fitzgerald, and Tuck and Patti, the duo performs a unique repertoire of jazz standards, Brazilian music and contemporary songs by their favorite songwriters. On any given night, the duo plays an entertaining and eclectic mix of music by Cole Porter, Antonio Carlos Jobim, Hoagy Carmichael, Dolly Parton and Joni Mitchell.

January 11 – 12, 2019  
Berry College Bass Days

Shenandoah Conservatory Double Bass Professor Donovan Stokes returns to join Eric Hanson for a two-day event featuring lectures on double bass repertoire, lessons, masterclasses, bass ensembles and recitals. Area bassists of all ages are welcome. Contact Hanson at ehanson@berry.edu for more information.

February 4 – 28, 2019  
**IMPRESS(I)ON** (invitational group exhibition)  
Moon Gallery, M-F, 9 a.m. – 5 p.m.

*IMPRESS(I)ON*, an invitational group exhibition, features artists who utilize printmaking methods in the creation of their work. Prints usually involve the production of multiple images through an indirect transfer process such as a block of wood, a copper plate, or fine mesh screen. Cutting away portions of the block, making incisions in the plate or blocking portions of the mesh screen allows for ink to be rolled, impressed, or passed through to create an image on a new surface like paper or fabric. The show surveys a range of traditional printmaking methods—relief, etching, lithography, silkscreen—while also expanding into photographic and digital technologies or hybrid combinations. *IMPRESS(I)ON* also highlights different uses of print media including animation, artist's books, installation, and sculpture. The exhibit features work by several artists including Ron Abram (Granville, Ohio), Melissa Harshman (Athens, Ga.), Berry alumnus Jess Hinshaw (Columbus, Ohio), Sarah Marshall (Tuscaloosa, Ala.) and Stephanie Smith (Atlanta).

**Sarah Marshall**  
Artist's talk/reception Monday, February 4, 5 p.m.

As part of the *IMPRESS(I)ON* exhibition, Sarah Marshall will discuss her print-based work that utilizes printing methods to explore diverse topics. Her contribution to the show, as an example, is from her *Learning to Sleep* series that enlists photographic processes like cyanotypes with silkscreen and relief printing methods printed on sections of cloth that are sewn together.

**Ron Abram**  
Artist's talk/reception Monday, February 18, 5 p.m.

Also in conjunction with the *IMPRESS(I)ON* exhibition, Ron Abram will give a talk about his work that often combines traditional printing processes like etching with animation and sculpture. The work is connected to a range of narratives including stories by the Brothers Grimm but in the context of queer identity.





FLORENCE PRICE



BERRY COLLEGE  
DANCE TROUPE



ALICIA HENRY

February 25, 2019

Voice Students in Concert: African-American Spiritual and Song  
College Chapel, 7:30 p.m.

Celebrating Black History Month, the voice students of Berry College's Music Program will present a program of spirituals and art songs by African-American Composers. The program will include vocal music by such prominent composers as William Grant Still, Moses Hogan and Florence Price.

### GUEST ARTIST SERIES

February 28, 2019

David Murray, piano

Ford Auditorium, 7:30 p.m.

In June 2003, Dr. David Murray released his first collaborative recording, *Blue: The Complete Cabaret Songs of William Bolcom and Arnold Weinstein*, about which *Opera News* commented that "Mr. Murray aces Bolcom's fiendishly difficult piano parts," while *BBC Music Magazine* described the recording as "exemplary." In 2005, he made his Carnegie Hall debut, a performance described as "first-rate" and "perfect" by the *New York Concert Review*. A second recording, Murray's own arrangement for soprano and piano of Elvis Costello's song cycle, *The Juliet Letters*, was released in 2006. His first recording for solo piano, *C. P. E. Bach's Württemberg Sonatas, Vol. 1*, was released in May 2013.

Murray is professor of piano at Georgia Southern University. This recital is part of a faculty recital exchange.

February 28, 7:30 p.m.; March 1, 7:30 p.m.; March 2, 2 p.m. and 7:30 p.m.

Berry College Dance Troupe presents *Prism*

Rome City Auditorium

Tickets are available for advance sale at the Krannert Info Desk

Tickets the day of the show are available beginning an hour before the performance; \$5 Students, \$10 Adults

*Prism* offers a variety of perspectives on everything from current events to personal experiences through the media of dance. The way our gaze connects with the object of desire or the focus of our contempt colors how we see what surrounds us, while our subjective response to how we are being seen informs our reaction to the other. Ballet, contemporary dance, Latin and jazz dance will illustrate the prism effect.

March 4 – April 4, 2019

Alicia Henry (solo exhibition)

Moon Gallery, M-F, 9 a.m. – 5 p.m.

Artist's talk/reception March 4, 5 p.m.

Nashville-based artist Alicia Henry features her distinctive work that continues her inquiries with the human figure and how it connects the personal with community. She enlists a mix of materials—paint, marker, thread, tea, watercolor—on leather, felt, plastic and paper to create cut-out figures in isolation or grouped together. Through a complex process of layering these materials she creates portraits, fragmented figures or figures with missing limbs that speaks to a shared humanity that possess quiet power and dignity.

Recent exhibitions include, *Witness*, at the Liliana Bloch Gallery in Dallas and the group show, *The Architecture of Limitless Delusion*, at the Texas A&M Commerce University Gallery. Her work has been shown in many important venues including the Frist Center for the Visual Arts in Nashville and the Museum of Contemporary Art Australia in Sydney. She is the 2016 winner of the Society 1858 Prize for Contemporary Southern Art. Henry received her BFA from the School of the Art Institute of Chicago in Painting and her MFA from the Yale University School of Art.

March 21, 2019

Elementary and Middle School Choir Festival

Stefanie Cash and Rick McKee, directors

Ford Dining Hall, 4 p.m.

Join Berry College for the annual Elementary and Middle School Choir Festival.



HYUNJUNG  
RACHEL CHUNG

Students from around Georgia will rehearse throughout the day, culminating with a performance at 4 p.m. in Ford Dining Hall. There will be a 7th and 8th grade mixed voices choir and a 5th and 6th grade treble voices choir.

The mixed choir will be under the direction of Dr. Stefanie Cash, Director of Music Education at Berry College, and the treble choir will be directed by Rick McKee, Adjunct Professor of Early and Middle Grades Music Education at Kennesaw State University.

### GUEST ARTIST SERIES

March 21, 2019

Hyunjung Rachel Chung, piano  
Ford Auditorium, 7:30 p.m.

Born in South Korea, Hyunjung Rachel Chung has concertized in North America, Europe and Asia. She has distinguished herself in several competitions including the 27th Artist International New York Debut Audition, Milosz Magin International Piano Competition and International Web Concert Hall Competition. After presenting her New York recital debut at Carnegie's Weill Recital Hall in 1996, Chung has appeared in various concert venues, and accepted invitations to perform and present lectures and masterclasses in the South Carolina Chamber Music Festival, Grumo Festival in Italy, Forty Fingers International Piano Festival in Rome, Arioso Musica Domani International Composition Prize, Piano at Peabody Workshop, Blue Lake Summer Arts Festival, Hawaii International Conference for the Arts and Humanities, College Music Society International Conference and Van Cliburn Piano Institute.

Chung currently serves as Associate Professor of Piano at Spelman College in Atlanta, Ga.

April 2, 2019

Berry College Choirs' Spring Concert  
Paul Neal and Stefanie Cash, directors  
College Chapel, 7:30 p.m.

The Berry College Choirs' Spring Concert will feature an evening of choral music presented in the beautiful College Chapel. This concert will showcase music performed by Berry Men's and Women's Choirs. Also, Berry Singers will perform the work, *Rejoice in the Lamb* by Benjamin Britten, accompanied by Berry College organist Steven Wooddell.

April 4, 2019

Berry College Symphony Orchestra Spring Concert  
Eric Hanson, director  
Ford Auditorium, 7:30 p.m.

The Berry College Symphony Orchestra presents strings in a variety of large and small ensemble settings. This concert will feature special guests and student soloists.



STEFANIE CASH



MATTHEW WHITE



### BERRY COLLEGE CONCERT SERIES

#### CONCERT V

April 5, 2019

Trumpeter Matthew White with  
the Berry College Jazz Ensemble  
John David, director  
Ford Auditorium, 7:30 p.m.

The Berry Jazz Ensemble will present The Jazz Soul of Matthew White while joined by acclaimed trumpeter and composer Matt White. Heralded as a new major voice in jazz, his debut album, *The Super Villain Jazz Band*, has gained widespread critical acclaim including four stars in *Downbeat Magazine*. White is the Director of Jazz and Commercial Music at Coastal Carolina University and has performed with Bob Mintzer, Jeff Coffin, Dave Liebman, Rihanna and Victor Wooten.



# STUDENT HONORS SHOW



**BERRY COLLEGE  
THEATRE COMPANY**



**CARA MORANTZ**



**April 8 – 15, 2019**

**Annual Student Honors Show**

**Alicia Henry, juror**

**Moon Gallery, M-F, 9 a.m. – 5 p.m.**

**Juror's talk/reception April 9, 5 p.m.**

The Annual Student Honors Show features work made in Berry College's studio art courses from the 2018-19 academic year. Work is shown from introductory through advanced courses in design, drawing/painting/print media, and ceramics/sculpture.

At the opening reception our juror, noted visual artist Alicia Henry, will announce the award winners. A committed educator, Henry has taught art in the Peace Corps and on a South Dakota Indian Reservation. Currently she is the discipline coordinator for art and associate professor at Fisk University in Nashville, Tenn.

**April 9, 2019**

**Student Honors Recital**

**Sponsored by Pi Kappa Lambda**

**Ford Auditorium, 5:30 p.m.**

In conjunction with the Berry College Symposium on Student Scholarship, select Berry College music students will perform solo works demonstrating their talents and courses of study.

**April 9 – 14, 2019**

**Berry College Theatre Company presents *Dogfight***

**Music and lyrics by Benj Pasek and Justin Paul; book by Peter Duchan**

**Based on the Warner Bros. film and screenplay by Bob Comfort**

**Directed by Anna Filippo and Artist-in-Residence David Alford**

**Sisters Theatre, 7:30 p.m. Tues. – Sat.; 2 p.m. Sun. matinee**

**[berry.edu/bctc-tickets](http://berry.edu/bctc-tickets)**

As Eddie Birdlace and his fellow marines celebrate their final moments together before departing for war, they participate in a dogfight, a cruel game where they each bet money on who can bring the ugliest date to a party. Eddie sets his gaze on Rose, a local waitress who has never been on a date in her life, and they embark on a wild night that eventually ends in heartbreak. Unexpected and misguided, *Dogfight* is a story about the cruelty of human nature, finding forgiveness and starting over.

**April 16, 2019**

**Berry College Wind Ensemble Spring Concert**

**Lauren Denney Wright, director; Cara Morantz, guest conductor**

**Ford Auditorium, 7:30 p.m.**

This concert brings guest conductor Dr. Cara Morantz from the University of Alabama - Birmingham to conduct the Berry College Wind Ensemble. The program will feature a broad spectrum of works from modern to classics.

**April 22 – 26, 2019**

**Senior Thesis Exhibition (week I)**

**Hillary Albertson, Ryan Sepe and Erin Shetler**

**Moon Gallery, M-F, 9 a.m. – 5 p.m.**

**April 29 – May 3, 2019**

**Senior Thesis Exhibition (week II)**

**Lindsey Campbell, Emily Dover, Lauren Evans and Stephen Wojcik**

**Moon Gallery, M-F, 9 a.m. – 5 p.m.**

Senior Thesis exhibitions serve as the capstone experience for art majors completing the studio art concentration. These exhibitions represent the culmination of a student's experience in the art program and allow them to focus on a particular media. These exhibitions are the result of students formulating and carrying through their own research agenda. Work is then prepared for public display or portfolio.



# GREAT SPACES INSPIRE GREAT PERFORMANCES

The arts have found many champions as a priority of *LifeReady: The Berry College Campaign for Opportunity*. In 2017, we ushered in a new era for the dramatic arts on campus with the completion of Sisters Theatre and renovation of supporting spaces in Blackstone Hall. Now the \$5.3 million renovation and restoration of Ford Auditorium takes center stage.

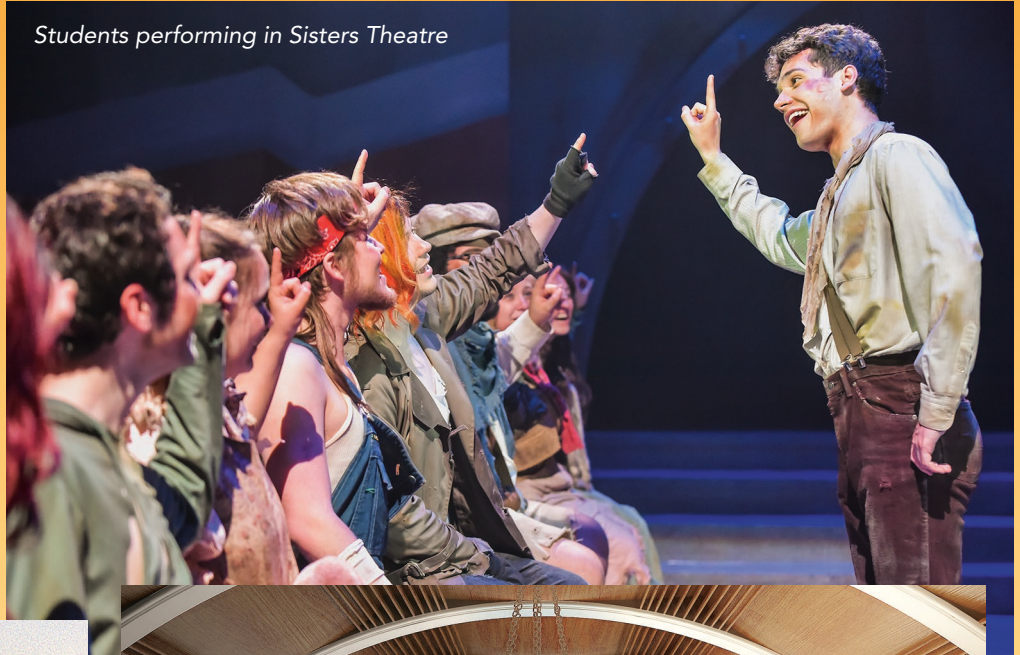
Help us make **beautiful music** by transforming one of Berry's most iconic structures into a **first-class recital hall**!

Plans include:

- High-performance acoustics
- Enlarged stage
- 366 seats in arched configuration
- Redesigned balcony
- Digital lighting and sound systems
- Climate-controlled instrument storage
- Renovated foyer/lobby
- Restoration of historical architectural elements

Visit [berry.edu/fordauditorium](http://berry.edu/fordauditorium) for more details. Gifts can be made at [berry.edu/gift](http://berry.edu/gift). Many naming opportunities are available.

Students performing in Sisters Theatre



**Creating places and spaces that spur student achievement in the arts** is just one goal of *LifeReady: The Berry College Campaign for Opportunity*. To learn more and discover how you can help, visit [berry.edu/LifeReady](http://berry.edu/LifeReady) or call **877-461-0039**.

THE BERRY COLLEGE  
CAMPAIGN FOR OPPORTUNITY

**LIFE READY**





## THE FINE ARTS DEPARTMENT AT BERRY COLLEGE

The Berry College Fine Arts Department incorporates the artistic disciplines of the visual arts, dance, music and theatre. The mission of the Fine Arts Department is to provide a quality education and practical experiences for our students, while enriching the artistic and cultural presence on our campus and in the community.

Undergraduate degrees of study are available in several concentrations including: Theatre, Music Performance, Music Education, Music Business, Studio Art, Art Education and Art History.

Fine Arts Department | Berry College  
P.O. Box 490309 | 706.236.2289  
[www.berry.edu/finearts](http://www.berry.edu/finearts)

## ABOUT BERRY COLLEGE

Berry is a nationally-regarded liberal arts college known for the quality and value of its educational experience. Located on a beautiful 27,000-acre campus, Berry provides an integrated education that unites a challenging academic program with opportunities for meaningful work experience and significant service to others.

This commitment to providing a firsthand educational experience – expressed as “Head, Heart and Hands” by college founder Martha Berry – remains just as relevant today as it was when the institution was founded in 1902.

## Fine Arts Faculty and Staff

*Adam Hayes, Chair      April Allen, Secretary*

### ART

J. Bradley Adams, M.F.A.	Stefanie Cash, Ph.D.
Brian Barr, M.F.A.	John David, M.M.
John King, M.F.A.	John Davis, D.M.A.
Dennis Ritter, M.F.A.	Lauren Denney Wright, D.M.A.
Virginia Troy, Ph.D.	Mickey Fisher, M.M.
	Eric Hanson, D.M.A.

### THEATRE

David Alford, The Juilliard School Diploma	Adam Hayes, D.M.A.
Alice Bristow, M.F.A.	Ellie Jenkins, D.M.A.
Anna Filippo, Ph.D.	Paul Neal, D.M.A.
Logan Reagan, M.F.A.	Kathryn Nobles, B.M.
	Gary Paulo, M.M.
	Casey Thomas, D.M.A.
	Sean Thrower, M.M.

### MUSIC

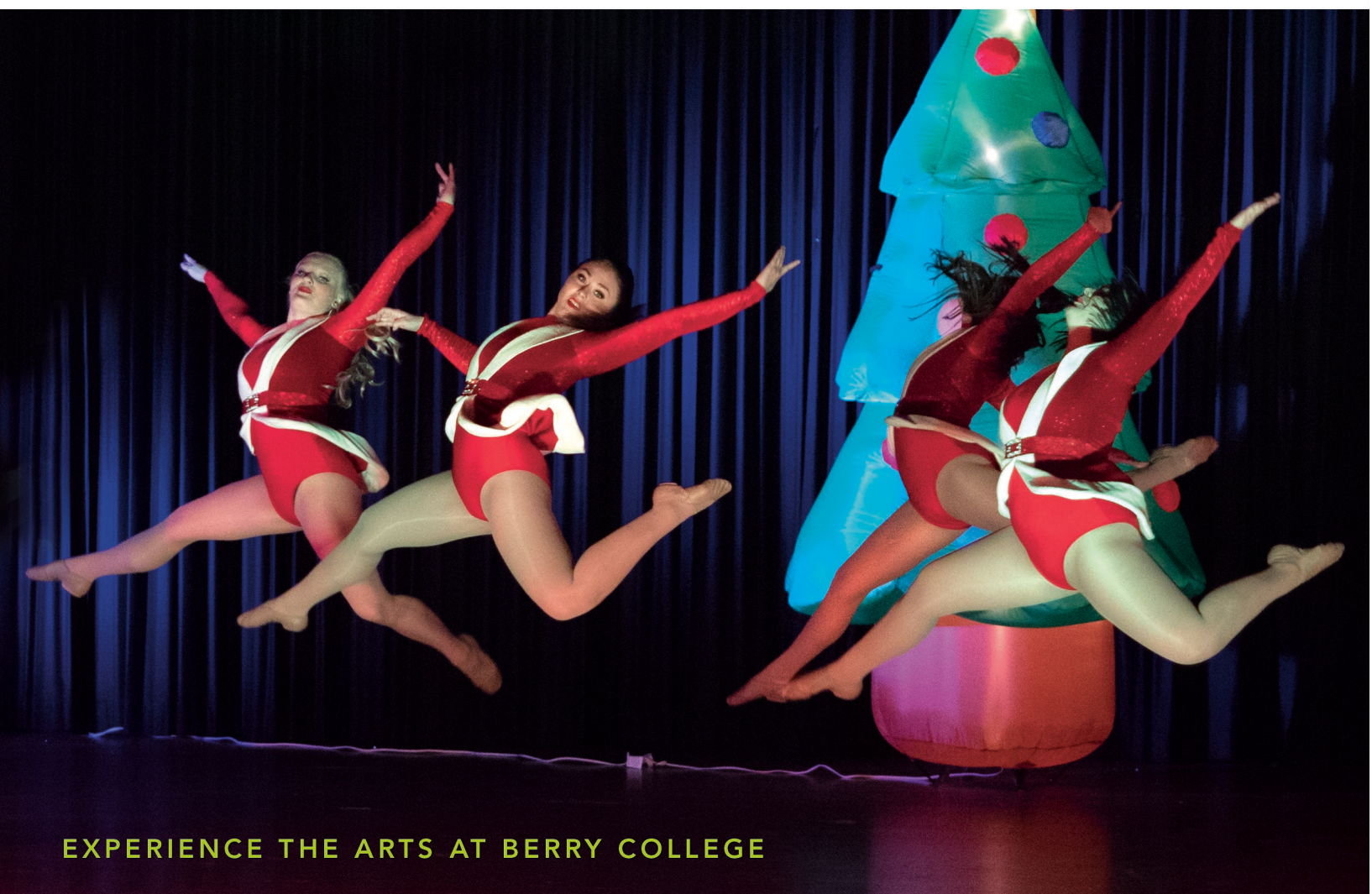
Ruth Baker, M.M., M.M.E	Jennifer Williams, M.M.
Charles Calloway, D.M.A.	Stephen Wooddell, M.M.
Annie Camp, M.M.	
Kris Carlisle, D.M.A.	
Wendy Case, D.M.A.	

### DANCE

Stacey Perkinson, B.A.
Jeanne Schul, Ph.D.

BERRY COLLEGE  
Department of Fine Arts  
P.O. Box 490309  
Mount Berry, GA 30149-0309

ADDRESS SERVICE REQUESTED



EXPERIENCE THE ARTS AT BERRY COLLEGE